



# 200 CENTRAL AVENUE

ST. PETERSBURG, FLORIDA

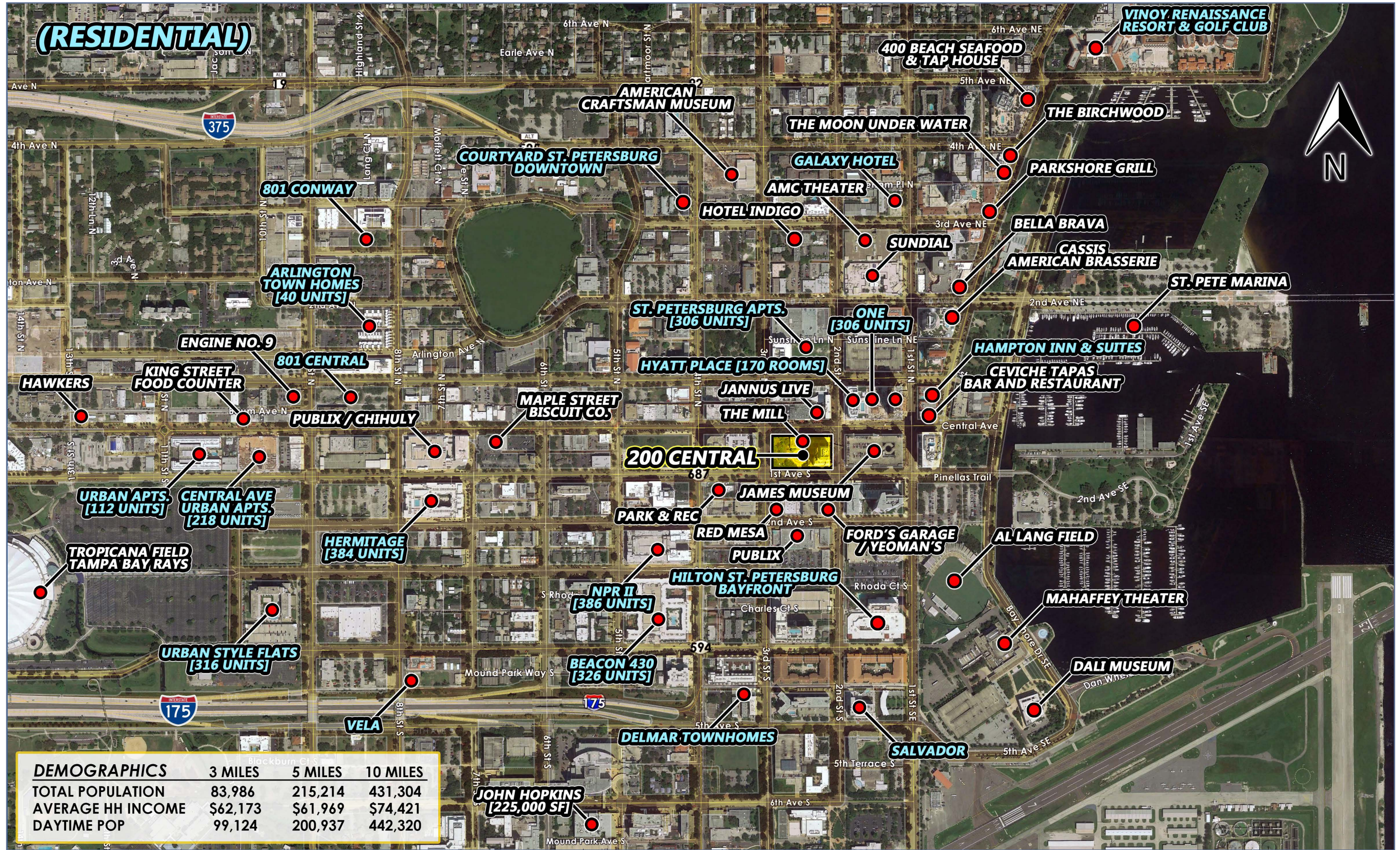




# DOWNTOWN ST. PETERSBURG

## 200 CENTRAL AVE

St. Petersburg, Florida



**(RESIDENTIAL)**

DEMOGRAPHICS	3 MILES	5 MILES	10 MILES
TOTAL POPULATION	83,986	215,214	431,304
AVERAGE HH INCOME	\$62,173	\$61,969	\$74,421
DAYTIME POP	99,124	200,937	442,320



# PRIME LOCATION

200 CENTRAL AVE

St. Petersburg, Florida



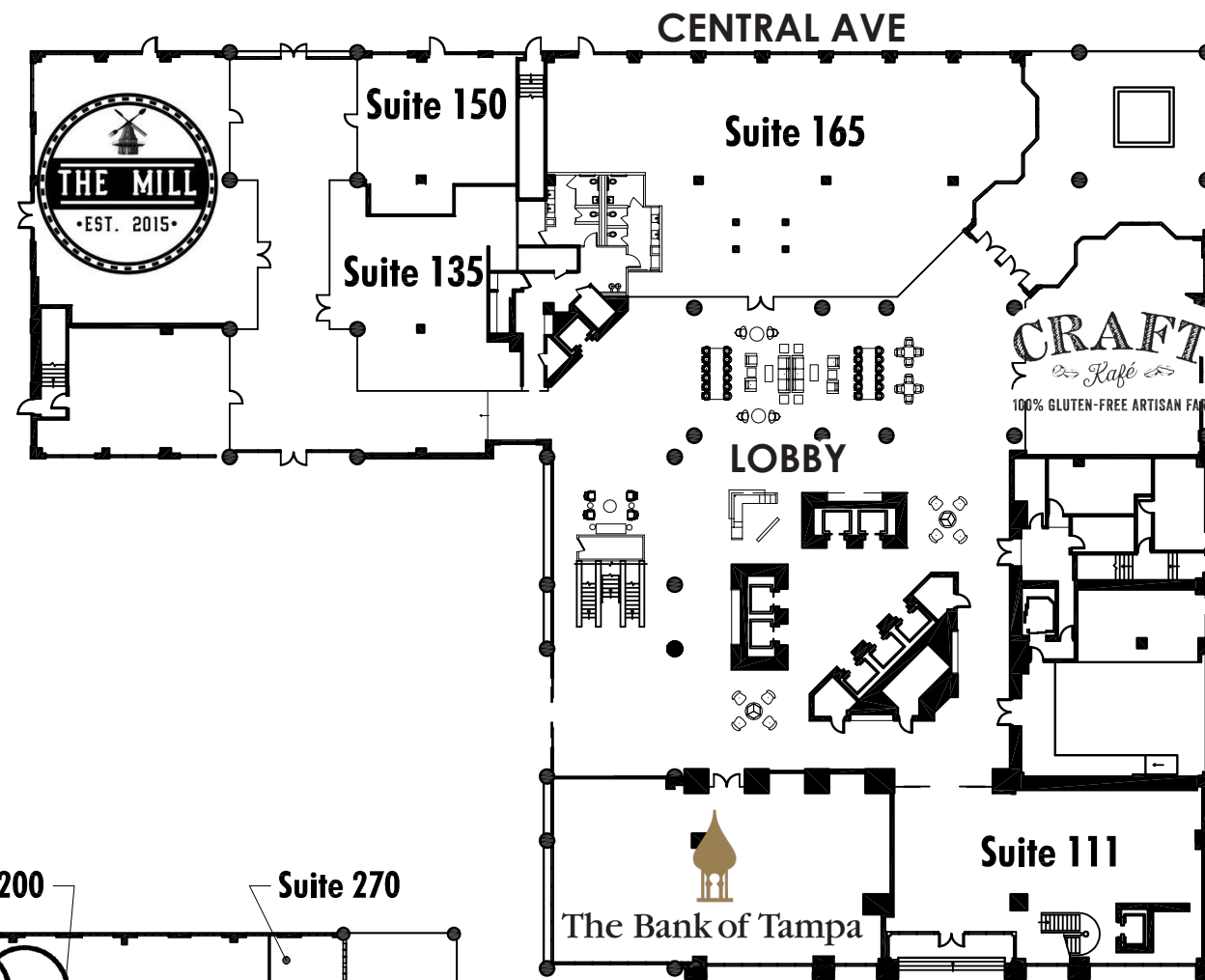


# FLOOR PLANS

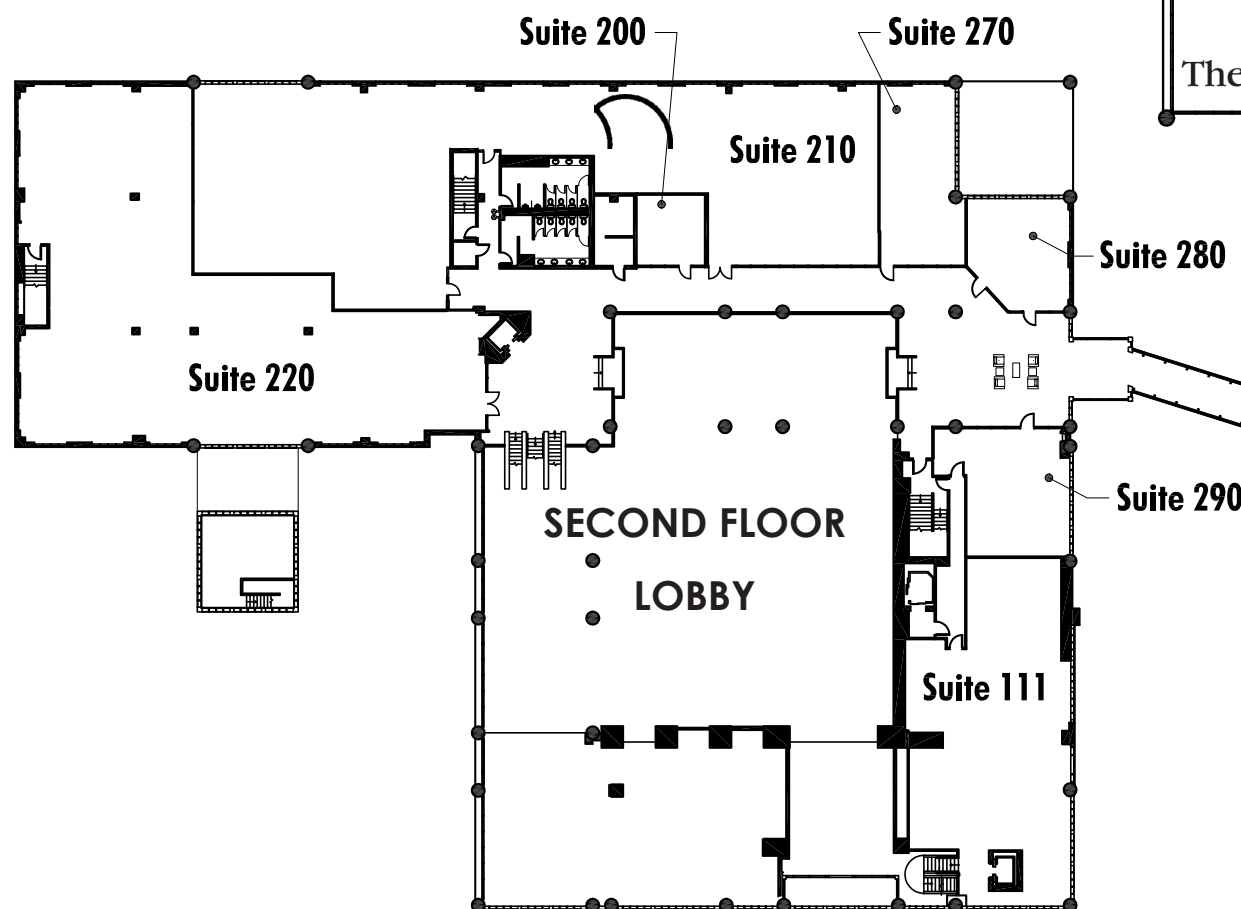
200 CENTRAL AVE

St. Petersburg, Florida

## 1ST FLOOR



## 2ND FLOOR



- Up to 30,000sf of contiguous space
- Incredible Central Avenue street front opportunity
- Unique roof top patio opportunity
- Surface parking lot servicing retail and restaurants



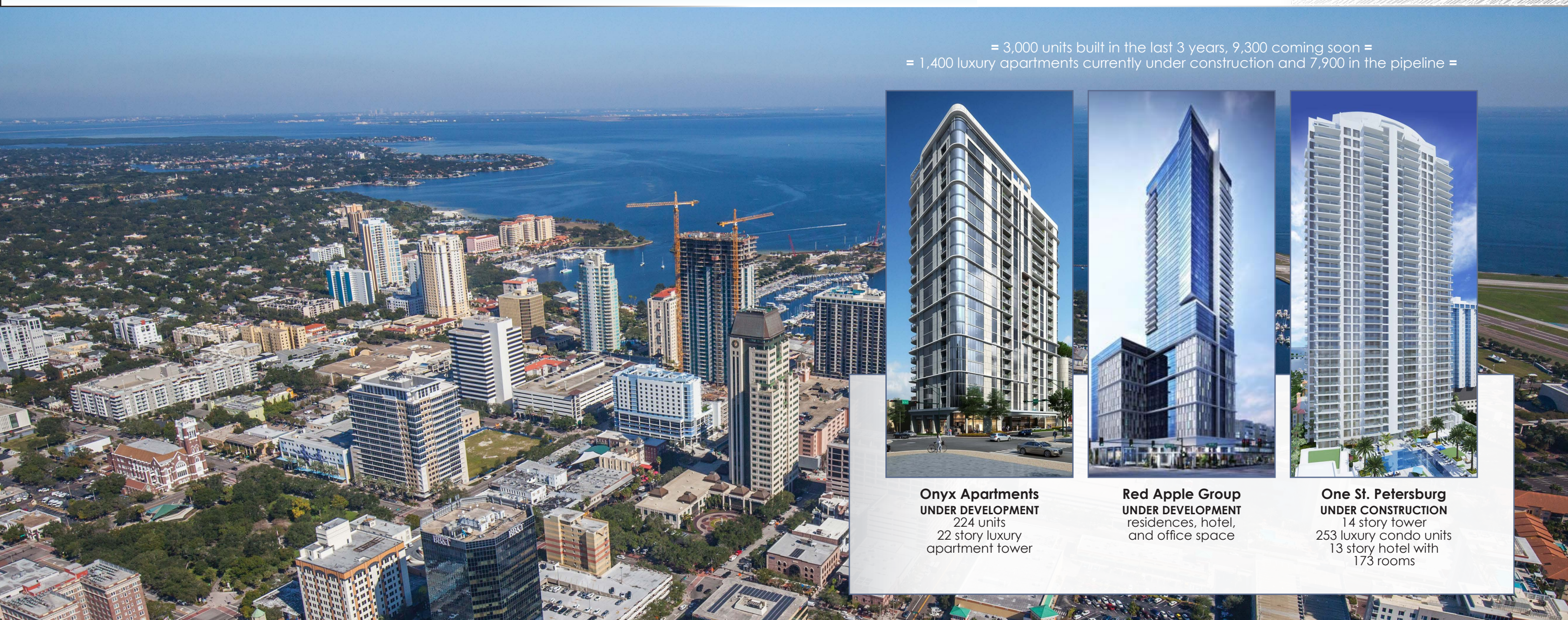


# SURROUNDING DEVELOPMENT

## 200 CENTRAL AVE

St. Petersburg, Florida

= 3,000 units built in the last 3 years, 9,300 coming soon =  
= 1,400 luxury apartments currently under construction and 7,900 in the pipeline =



**Onyx Apartments**  
UNDER DEVELOPMENT  
224 units  
22 story luxury  
apartment tower



**Red Apple Group**  
UNDER DEVELOPMENT  
residences, hotel,  
and office space



**One St. Petersburg**  
UNDER CONSTRUCTION  
14 story tower  
253 luxury condo units  
13 story hotel with  
173 rooms

**Bliss Condos**  
COMPLETED  
4th Avenue North  
18 story tower  
30 luxury condos



**The Heritage**  
COMPLETED  
\$65 MM project  
8 stories  
348 apartments



**The Salvador**  
COMPLETED  
DDA Development  
74 unit  
13 story project





# CONTACT

200 CENTRAL AVE

St. Petersburg, Florida

JOHN AIELLO  
jaiello@sraretail.com  
561.309.7032

