



SUNDIAL

DOWNTOWN ST. PETERSBURG, FLORIDA





The Mall at Sundial is downtown St. Pete’s premier destination to shop, dine and unwind; an oasis in the heart of the city’s bustling downtown center. Just steps from the world famous waterfront, The Mall at Sundial is home to a special collection of shops, restaurants, and services unique to the Tampa Bay area. The center features a modern, clean design with finishes such as travertine, quartzite stone, custom stainless railings, European shade umbrellas, skylights and state of the art video boards.

DEMOGRAPHICS

	1 MILE	3 MILES	5 MILES
Total Population	19,215	93,902	225,296
Median Age	48.7	41.4	42.2
Daytime Population	33,125	84,779	158,171
Avg. HH Income	\$67,715	\$69,867	\$69,309

TENANTS

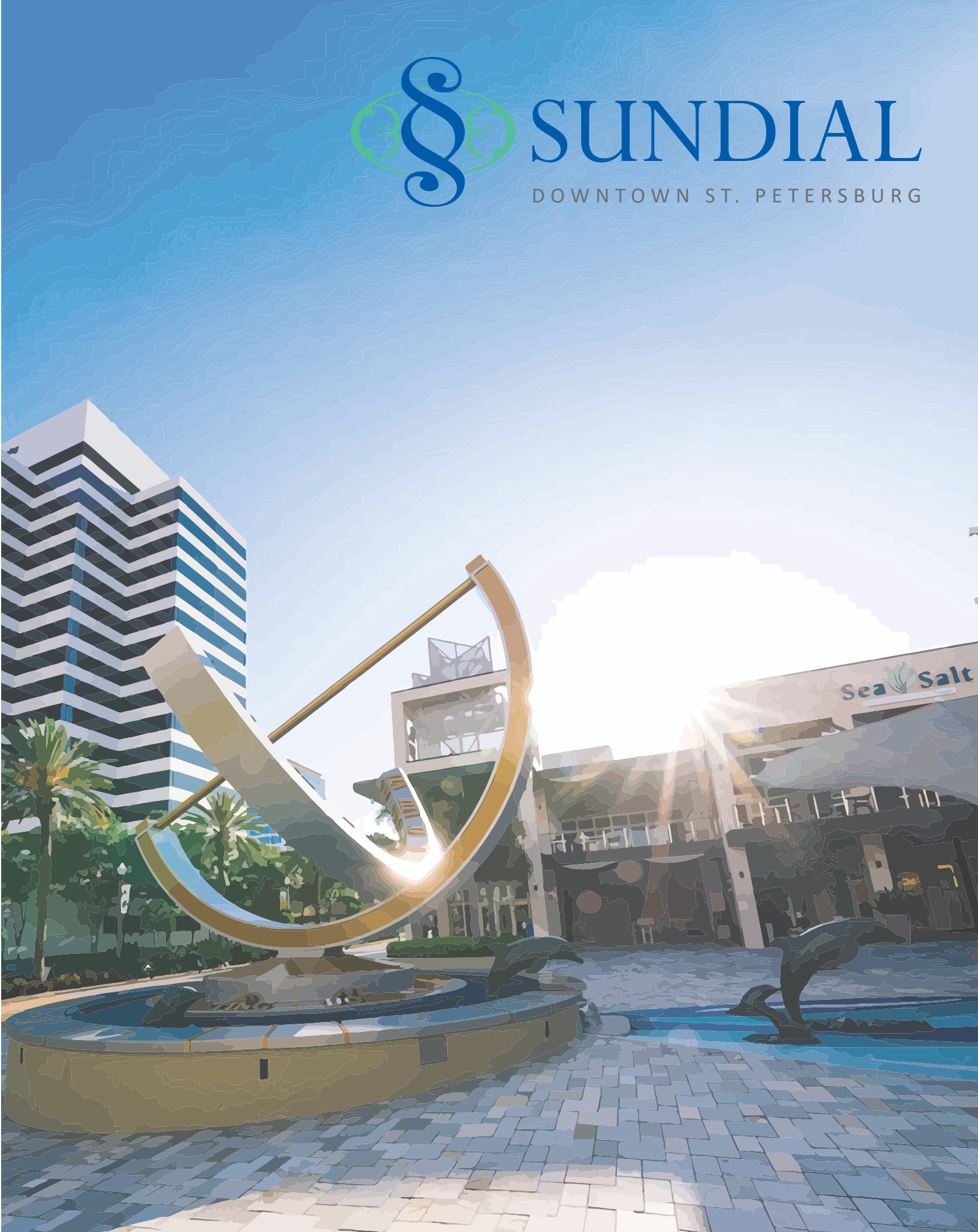






HIGHLIGHTS

- Premier 85,922 SF retail, dining and entertainment Lifestyle Center
 - 20 Screen AMC Multiplex to be completely renovated with a new luxury format
- Convenient seven-story parking garage with 1,350 spaces dedicated to Sundial
 - The only upscale Gourmet Market & Food Hall in St. Petersburg’s Central Business District
- Featuring a dramatic three-story working sundial, an iconic photography hotspot in Tampa & St Pete
- Outdoor courtyard with artwork created by René Lagler & Mark Aeling Travertine, quartzite stone finishes and landscaped walkways



DOWNTOWN ST. PETERSBURG

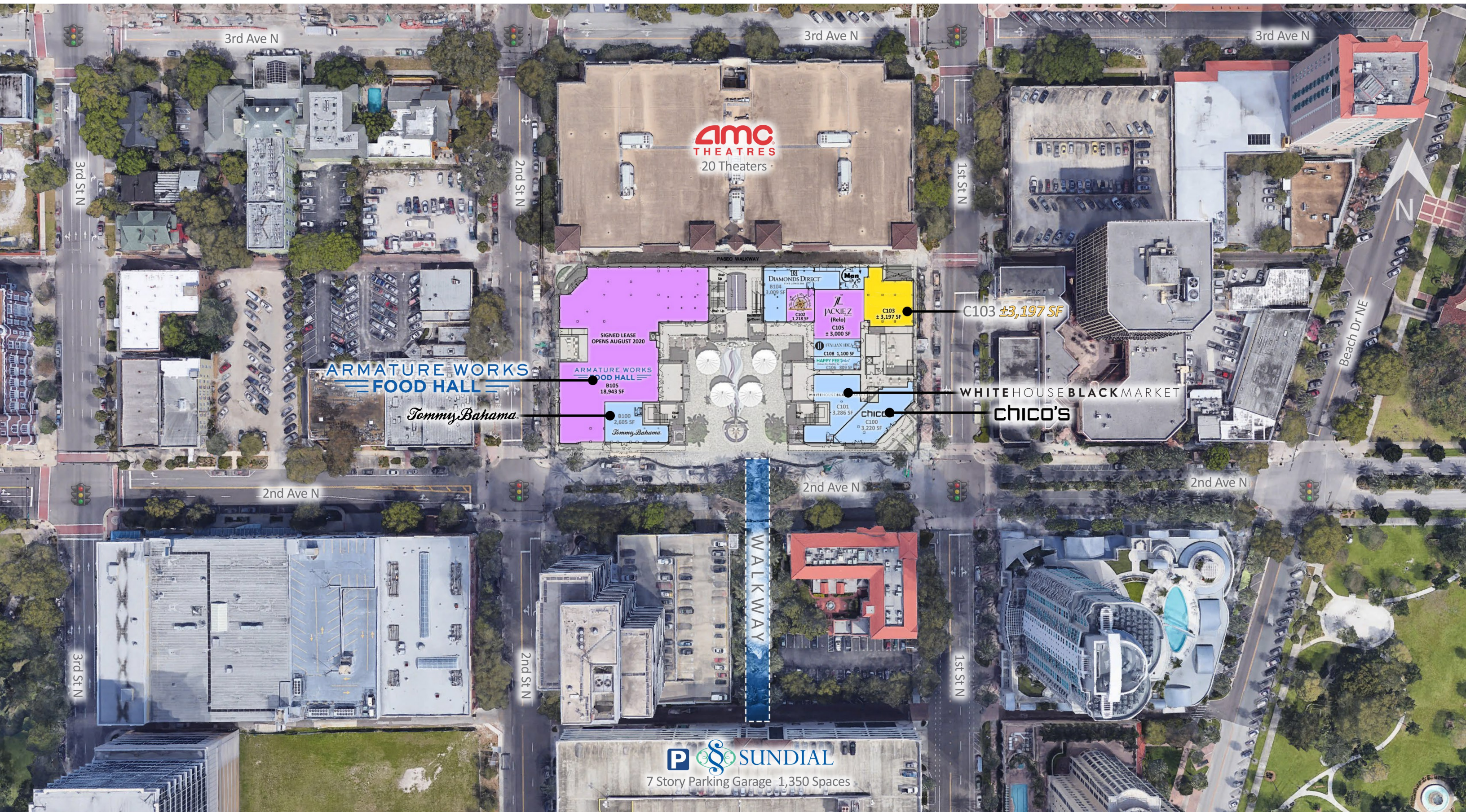


Sundial is located the heart of St. Petersburg's Central Business District and steps away from the world-famous waterfront of Tampa Bay.
Sundial is walking distance from the following attractions:

- Beach Boulevard restaurant district
- St. Pete Marina
- University of South Florida
- Soon to be renovated St. Pete Pier
- St. Pete's most exclusive waterfront condos and single-family homes
- Critical mass of Downtown apartments



GROUND LEVEL



SECOND LEVEL



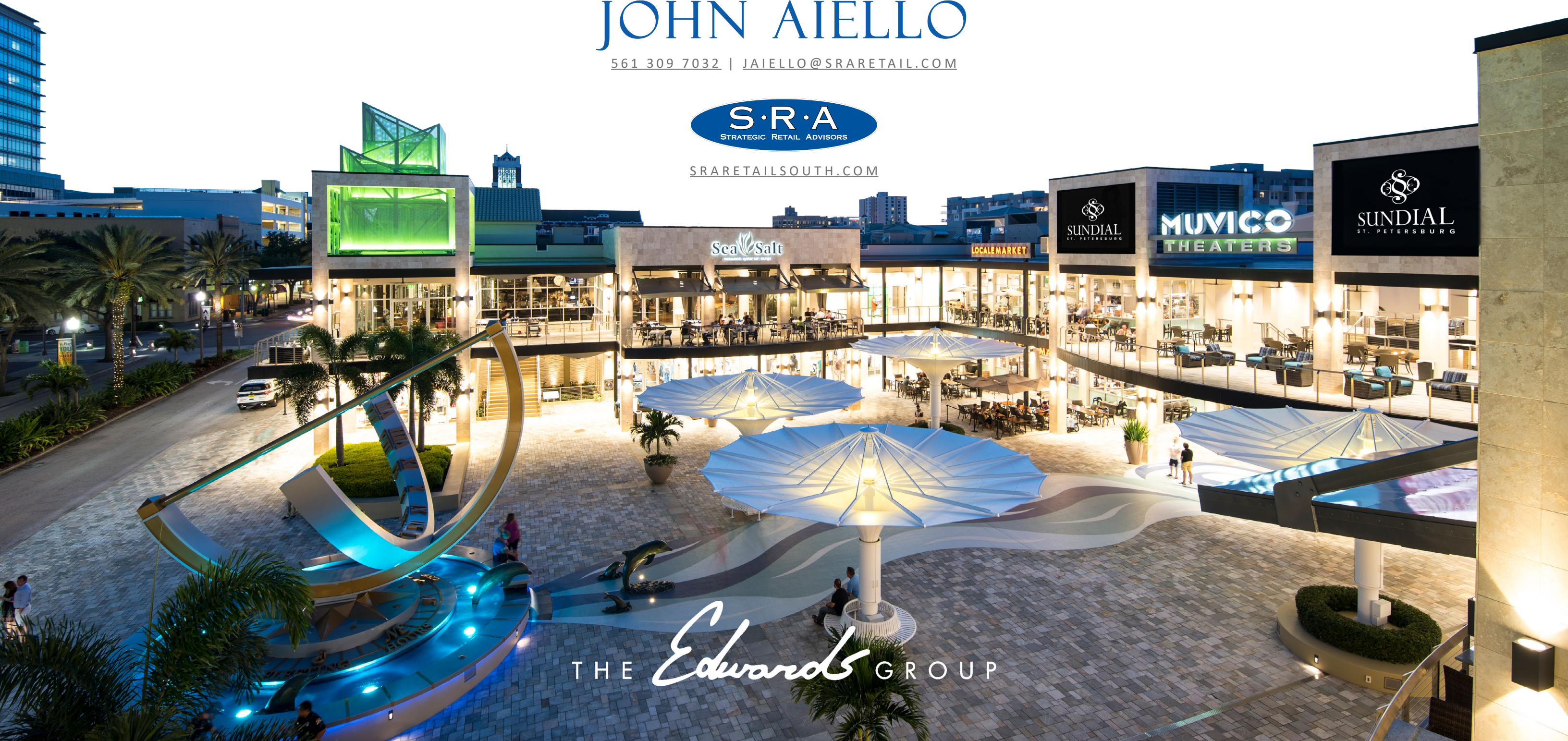


JOHN AIELLO

561 309 7032 | JAIELLO@SRARETAIL.COM



SRARETAILSOUTH.COM



THE *Edwards* GROUP