



# AVENIR

RETAIL | GOLF CLUB | COMMUNITY

PALM BEACH GARDENS, FL





# AVENIR TOWN CENTER



**Jack Nicklaus &  
Justin Thomas Designed**  
[Website & Video Link](#)

EXPLORE AVENIR



CLICK HERE

**218 Homes**  
**\$3.5M - \$12M**

**390 Homes**  
**\$700K - \$1.1M**

**118 Homes**

**469 Homes**  
**(55+) \$700K - \$900K**

**119 Units**  
**\$800K - \$1.1M**

**92 Homes**  
**\$950K - \$1.2M**

**Somerset Academy  
Charter School**  
**600 Students**

**107 Homes**  
**\$1.6M - \$3M+**

**JUPITER MEDICAL CENTER**  
**UFHealth**  
UNIVERSITY OF FLORIDA HEALTH  
**53,000 SF**  
**Hospital**

**98 Homes**  
**\$950K - \$1.1M**

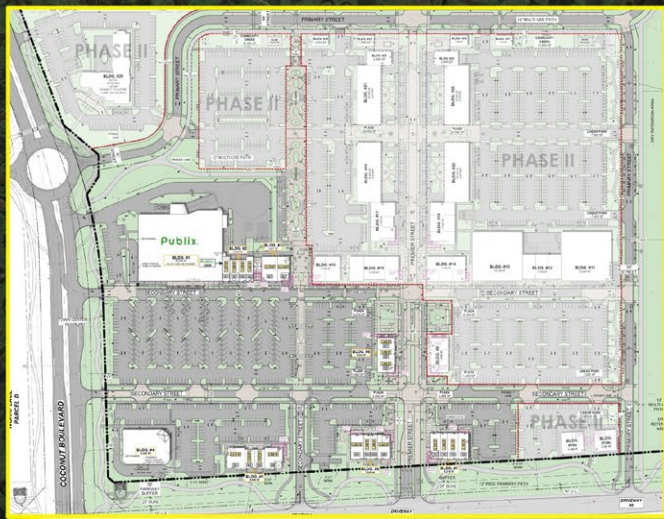
**Town Center**

**LEGEND**

- ▶ TRAIL ACCESS POINTS
- WALKING TRAILS
- RETAIL & COMMERCIAL AREAS



# AVENIR TOWN CENTER



**AVENIR**  
PALM BEACH GARDENS  
3,900 UNITS  
\$900K+

**SITE**

NORTH PBC  
PRIVATE  
AIRPORT

ANCIENT TREE  
97 UNITS  
\$800K-\$1.1M



**GLHOMES**  
3,900 UNITS

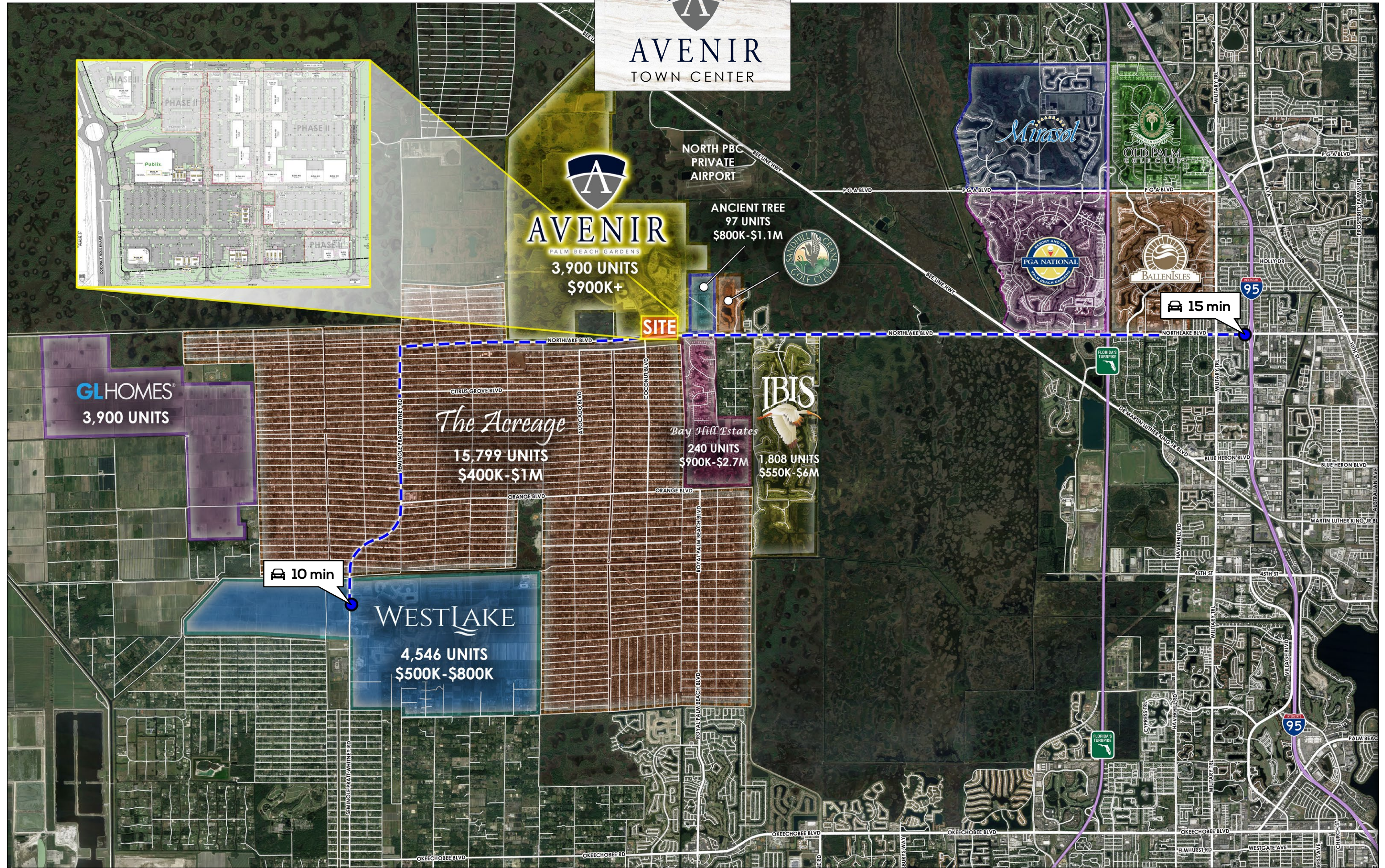
*The Acreage*  
15,799 UNITS  
\$400K-\$1M

**IBIS**  
Bay Hill Estates  
240 UNITS  
\$900K-\$2.7M  
1,808 UNITS  
\$550K-\$6M

**10 min**

**WESTLAKE**  
4,546 UNITS  
\$500K-\$800K

**15 min**







AVENIR  
PALM BEACH GARDENS

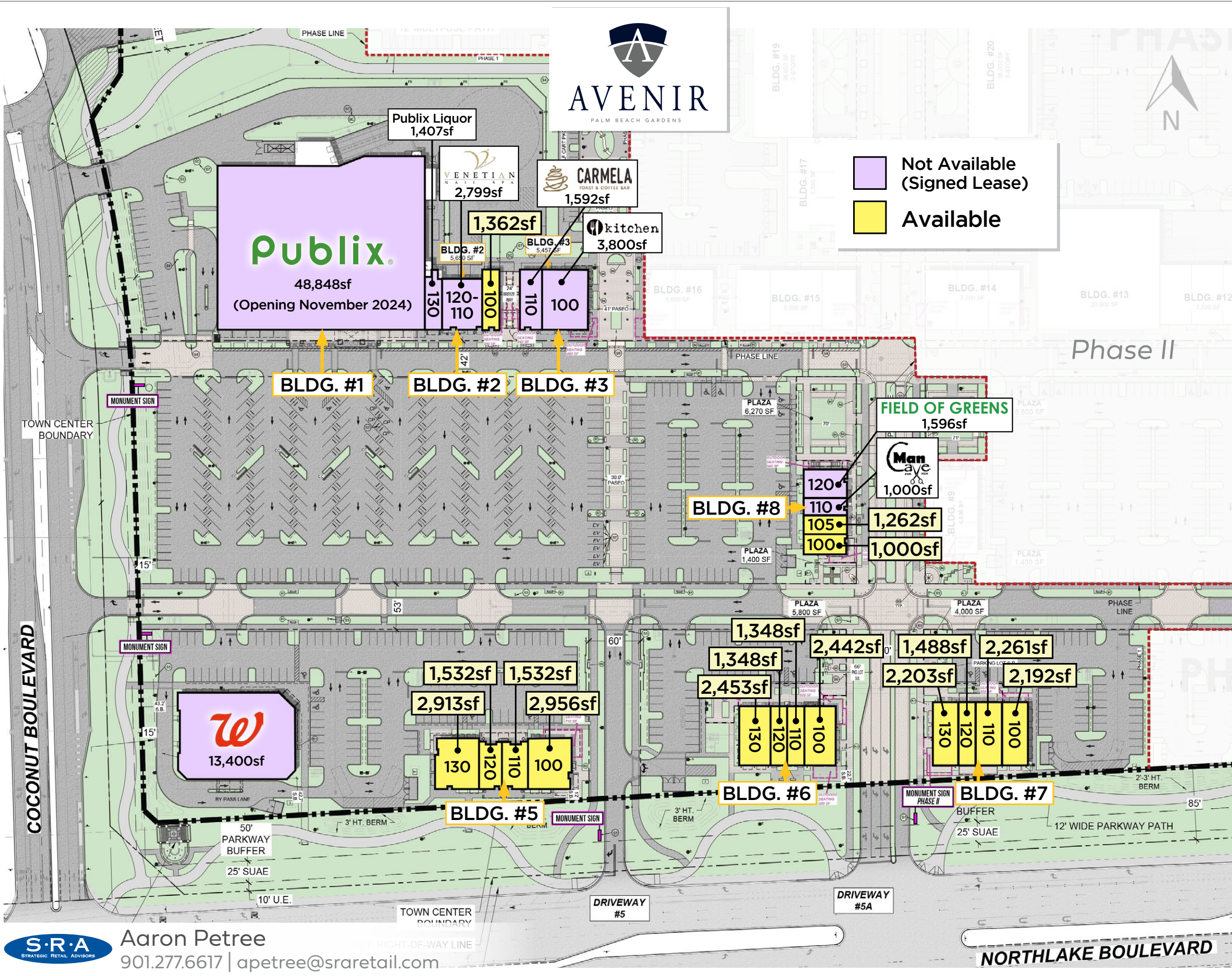


# AVENIR

## TOWN CENTER PHASE 1 & 2

4,752-ACRE COMMUNITY  
APPROVED FOR  
400,000 SF OF RETAIL SPACE  
2,000,000 SF OF OFFICES  
200,000 SF OF MEDICAL FACILITIES

 Not Available  
(Signed Lease)  
 Available



Aaron Petree  
901.277.6617 | apetree@sraretail.com



NORTHLAKE BOULEVARD

**Somerset Academy  
Charter School**



**JUPITER MEDICAL CENTER**  
**UFHealth**  
 UNIVERSITY OF FLORIDA HEALTH  
**53,000 SF**  
**Hospital**



**PANTHER™**  
 NATIONAL  
**Jack Nicklaus &  
 Justin Thomas Designed**  
[Website & Video Link](#)



# AVENIR

TOWN CENTER





# AVENIR

RETAIL | GOLF CLUB | COMMUNITY

AARON PETREE

901.277.6617

APETREE@SRARETAIL.COM

